

Product Brief

THE WALL & THE WALL Xtended FROM RAPTOR

A rock solid, easy-to-use Windows NT based firewall for small businesses and organizations

THE WALL FROM RAPTOR lets small businesses, municipalities and schools leverage the vast resources of the Internet safely and affordably.

THE WALL is Simple

THE WALL requires no networking expertise. It comes pre-configured, with an intuitive interface that makes setup and monitoring easy.

THE WALL is Secure

THE WALL uses proven Raptor firewall technology to stop hackers cold. Plus, the optional WebNOT capability prevents inappropriate materials from being downloaded into your site.

THE WALL is Affordable

Specifically designed for small businesses and organizations, THE WALL provides the security you need at a cost you can afford.

ROCK SOLID, AFFORDABLE SECURITY FOR THE INTERNET

The WALL uses Raptor's proven firewall technology – the same technology protecting banking, manufacturing, engineering, healthcare, government and educational organizations around the world.

THE WALL's simple, one-way design is tailored to the needs of small businesses and organizations. THE WALL gives users on your network complete access to the Internet. They can browse the web, send and receive Email, connect with popular news services, and transfer and retrieve files. If you are using THE WALL Xtended package, you can run Microsoft's standard IIS web server on the same Windows NT Server system. THE WALL Xtended helps secure your web server, protecting your web site from unauthorized changes.

THE WALL provides these features while denying unauthorized access to your network from the outside world. The result: an affordable security framework that protects your network from external attack, while giving your users the access they need to meet business goals.

FAST INSTALLATION, EASY MANAGEMENT

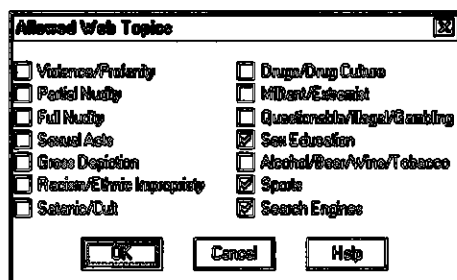
THE WALL comes with an easy-to-use graphical user interface that makes installation a snap. And once it's up and running, THE WALL provides real-time information on Web connections, file transfer, and overall firewall status via extensive log files. So you're always aware of how your network is being used.

THE WALL is easy to understand and manage, with an integrated On Line Help system that places explanations of each feature a mouse-click away. Best of all, THE WALL is designed for installation by non-technical users. It installs in approximately 15 minutes on a properly configured Windows NT system.

INTEGRATED SITE BLOCKING WITH WEBNOT

Not all information on the Internet may be suitable for bringing into your organization. With WebNOT, you can prevent access to potentially objectionable materials and still allow users to surf the Web.

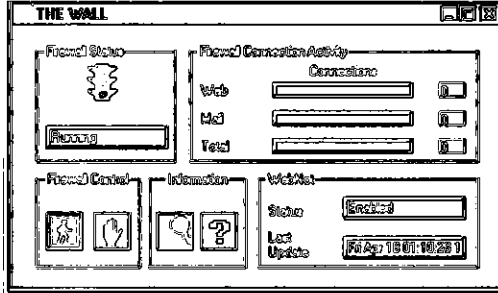
Available with THE WALL or as a separate option, the WebNOT subscription provides a professionally researched, regularly updated list of sites. A graphical menu lets you choose the categories to block. Categories covered by the WebNOT list include: Violence/Profanity, Nudity, Gambling, and other potentially inappropriate topics. The WebNOT list is thorough, covering both textual and graphical materials.



So while THE WALL provides secure access to the Internet, WebNOT assures that your network's resources – and your people's time – will not be used to surf inappropriate web sites.

AN UPGRADABLE INVESTMENT IN SECURITY

THE WALL is an investment in security. Start with the low-cost 25-user solution. As your business needs evolve, simply upgrade to THE WALL Xtended package. It offers support for 100 users, a web site on the same system and WALLmail. WALLmail relies on Raptor's EagleMobile product to give users secure remote access to their mail from home or on the road. WALLmail clients supported include Windows 95 and Windows NT.



When you are ready to take advantage of Raptor's full Five Domains of Enterprise Security, you can upgrade from THE WALL or THE WALL Xtended to Raptor's award-winning EagleNT family of products. In use by industry-leading companies around the world, the EagleNT product line includes bi-directional Internet and intranet firewalls, remote management capabilities, and full support for EagleMobile remote access products.

SYSTEM REQUIREMENTS

THE WALL runs on Windows NT Workstation or Server version 4.0. An Intel Pentium processor and 32 MB of memory, two supported Network Interface Cards, and a CD-ROM drive are required. THE WALL does not require a graphics accelerator, but a PCI bus is strongly recommended. Installations of THE WALL Xtended using the IIS Web Server require 64 MB of RAM and Windows NT Server 4.0.

THE WALL and THE WALL Xtended support a range of Network Interface cards, including 10Mb Ethernet, 100 Mb Ethernet, FDDI and Token Ring, plus Frame Relay or ISDN communications to your Internet Service Provider. For a full list of supported interfaces, visit THE WALL website at www.thewall.com.

ORDERING INFORMATION

THE WALL is affordably priced for small-to-medium sized businesses, municipalities and schools. At only \$995, THE WALL provides protection for up to 25 systems on your internal network. THE WALL Xtended protects up to 100 systems for \$2495 – less than \$25 per user. Raptor also offers a next version update.

Product	THE WALL	THE WALL Xtended
THE WALL	\$ 995	\$2495
WebNOT subscription	\$ 600	\$1000
THE WALL with WebNOT subscription	\$1495	\$3200
THE WALL next version update	\$ 150	\$375
WebNOT for THE WALL subscription annual renewal	\$ 150	\$300

PRODUCT SUPPORT

Support is provided by your Raptor reseller or via telephone at 1-888-843-7680. Support calls are chargeable at \$1.95 per minute to any major credit card. The first minute of each call is free.

FOR MORE INFORMATION

For more information on THE WALL or Raptor Systems, contact your Raptor Reseller, or see THE WALL web site at www.thewall.com.



69 Hickory Drive, Waltham, MA 02154, 1-888-5-THE WALL (North America), www.thewall.com, info@thewall.com

©1997 Raptor Systems, Inc. Raptor, THE WALL FROM RAPTOR, WebNOT, WALLmail, EagleMobile and Eagle are trademarks of Raptor Systems, Inc. All other trademarks are the property of their respective owners. Printed in USA

Lit#PB1-B